

**The Great Lakes Community Action Partnership Electric Partnership Program (EPP)** provides energy-efficient measures and education that can reduce electricity usage, lowering energy consumption and cost of utilities. Eligible households receive consumer education and may also receive energy-efficient light bulbs, water measures, and refrigerators or freezers.



**Great Lakes**  
COMMUNITY ACTION  
P A R T N E R S H I P

**Helping Communities Thrive,  
One Neighbor at a Time**

**This institution is an  
equal opportunity provider.**

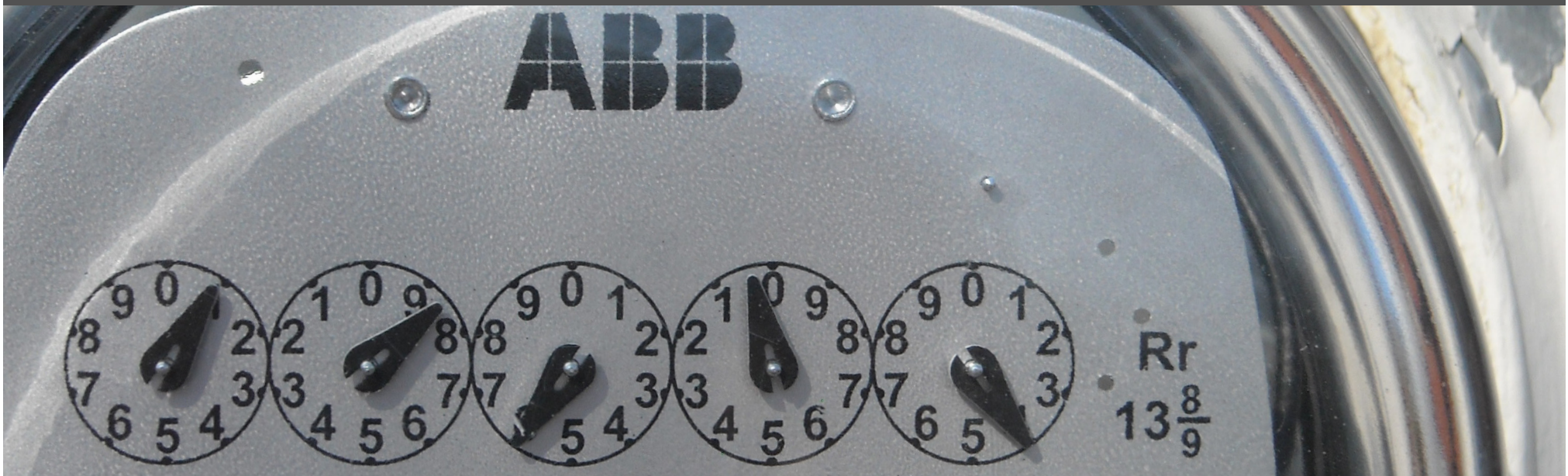
The Electric Partnership Program is administered by  
**Great Lakes Community Action Partnership**

127 S. Front St., Fremont, Ohio 43420  
419-334-8911 • 1-800-775-9767  
[www.glcap.org](http://www.glcap.org)

Great Lakes Community Action Partnership  
**ELECTRIC PARTNERSHIP  
PROGRAM**



# Lower energy usage and costs through EPP



**The Electric Partnership Program (EPP)** offers energy-efficiency education and solutions that can reduce home electricity usage. The program may also provide energy-efficient light bulbs, low-flow shower heads, refrigerators and other items for eligible applicants.

The program is available to residents of Erie, Huron, Lucas, Ottawa, Sandusky, Seneca and Wood counties. Residents must be customers of Toledo Edison, Ohio Edison or American Electric Power, and have at least 12 months of electrical usage at the current address.

Applicants must also be at or below 150% of Federal Poverty Guidelines. Applicants will need a copy of the household's most recent energy bills; a list of all household members with birth dates and social security numbers included; proof of income for each household member; and proof of citizenship or legal residency.

**Income requirements are as follows:**

Household size	Annual income
1	\$19,140
2	\$25,860
3	\$32,580
4	\$39,300
5	\$46,020
6	\$52,740
7	\$59,460
8	\$66,180

Great Lakes Community Action Partnership  
Housing & Energy Department  
419-333-6049 or visit [www.glcap.org](http://www.glcap.org)

